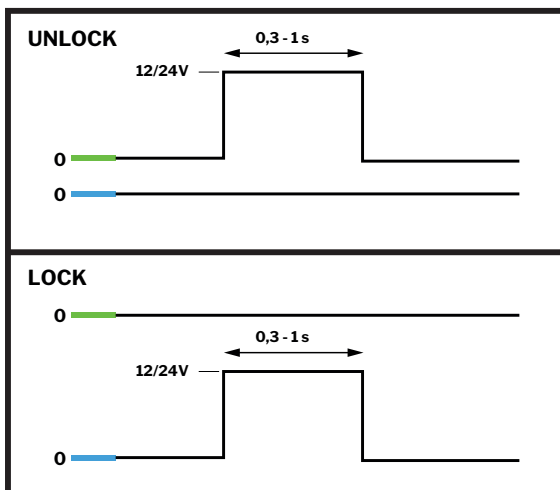
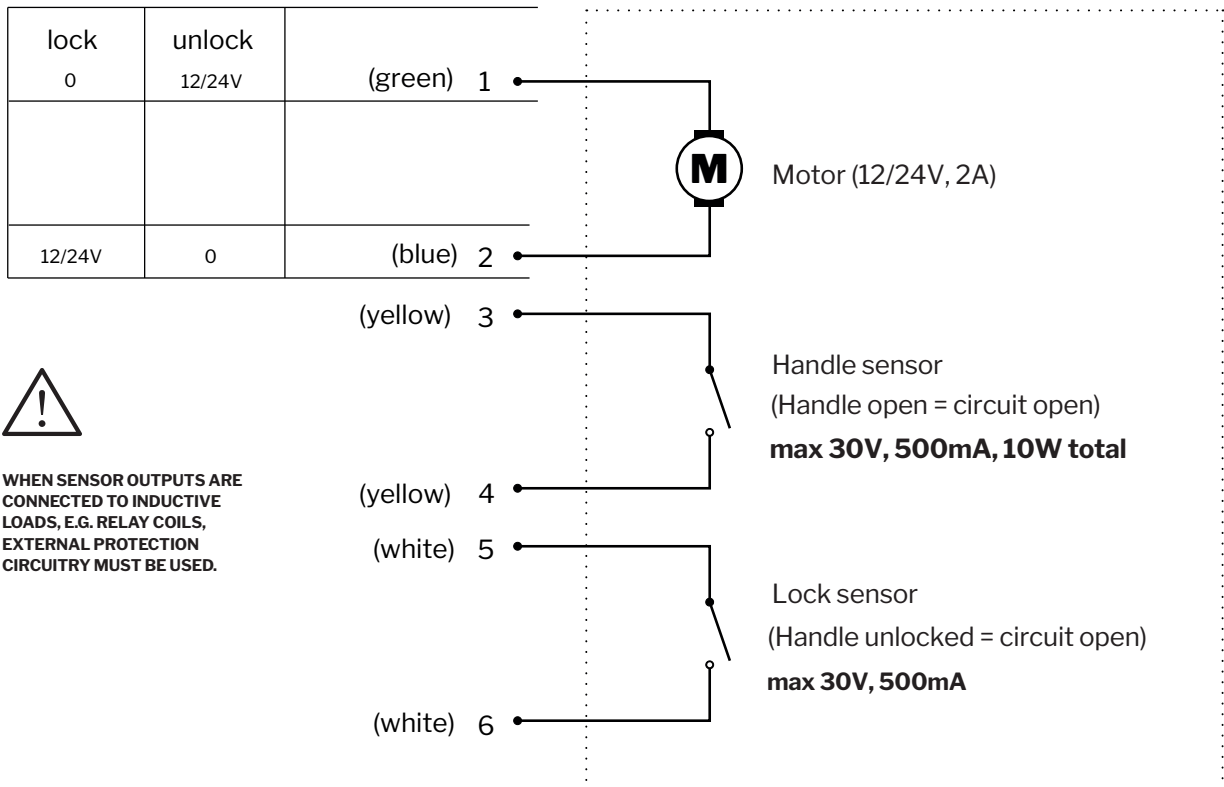


# Industralas Vector™ T3 Installation Manual

<b>Technical Specification</b>	
Operating Voltage	<b>2 models. 12 or 24V DC ± 10%</b>
Supply Current (Lock/Unlock Operation)	<b>max 2A</b>
Handle status sensor	<b>max 30V, 500mA, 10W total</b>
Lock status sensor	<b>max 30V, 500mA</b>
EMC Standards	<b>UN ECE R10</b>
Operating temperature	<b>-15 to +55 °C</b>
Operating cycles	<b>min 15,000 cycles</b>
Maximum tightening torque (4 nuts, M5)	<b>2,2 Nm</b>

## Wiring diagram

Lock/unlock impulse length 0.3 - 1.0 s



Graphic representation of electrical pulse